

Daniel Smith Company Presents

EAFA welcomes **Katherine Taylor**, Manager of the Bellevue Daniel Smith Art Supply Store, and **Annie Van Engelen**, a talented young artist from the Seattle area, who will give the December General Meeting demonstration.



Annie Van Engelen

Annie has been painting for 25 years in multiple mediums and has worked for Daniel Smith for 4 years in their catalog call center advising customers from all over the world. Annie also teaches, demonstrates, and represents Daniel Smith products at trade

shows. Having perfected her skills during her time with Daniel Smith, using every medium she's able to get her hands on, she will pass some of that priceless hands-on experience on to you in her demonstration. Annie and Catherine will have hands-on tables set up for review of the new soft pastels, watercolors, acrylics, tools, and books. See the best new tools along with the most inspiring books of the season.

Annie will cover three mediums in watercolor, soft pastel, and acrylic, using three supports: aqua board, pastel board, and a special primed canvas. The three distinctive elements of Annie's artwork are her intense use of color, organic forms, and dramatic perspectives. She specializes in large-scale landscape paintings but has also been exploring abstract forms. Annie's artistic influences over the last 25 years of painting range from Walton Ford's enormous figurative watercolors to Mark Rothko's use of color and space. Her artwork is also influenced by nature's perfection and endless variety of color. Annie has a degree in graphic design and illustration. Her studies are continuing at the UW in the BFA program beginning in the fall of 2008.

EAFA Potluck

The December General Meeting will include our annual holiday potluck, so bring your favorite finger food. Due to a full agenda, there will be no Monthly Competition.





President's Message

Dear EAFA Members,

Years ago the Society of Independent Artists had a rather proud motto, "no jury and no prizes."

We Independents have one rule

With a jury we'll not fool

It makes more sense, it seems to us,

To do without that stupid fuss.

As we've seen in the current 32nd Exhibition Carla O'Connor's seasoned eye as juror had a tough task in selecting artwork that turned out to be a feast for our eyes. I like to think we all produced quality work because as artists we are all striving to produce that magical piece. If your piece was not accepted in the show, please try to put it in perspective and work through the disappointment. This is just one show. There will be others.

As with all juried shows, each one of us is subject to the decisions of the juror. My work was not accepted in a number of shows this year. Now that may cause some to give up, but I see it as a learning experience, assessing whether the quality of the image was compromised, if the artwork had flaws, or if it was the juror needing to edit out from hundreds of images to make a quality show. I use some of the same images that were turned down, only to be accepted in the next show. Remember too that your work was not declined by EAFA, but rather by the juror.

'Tis one of the busiest months of the year for many of us. Each year I try to pare down my to-do list so that I'm not too busy to enjoy family and friends. I think this year I'll become my own juror and start culling activities in or out. I'm good at doing that. I'll cut out some of that stupid fuss over baking cookies, many of which seem to be left for the freezer or, worse yet, my waist line.

Come to think of it, a sure-fire way of getting your piece in the show and avoiding the jury process, is to become chair or co-chair of the event. That way you can have your cookies and eat them too! *Happy Everything!*

Thoughts from your president,

—Charlette Haugen

EAFA News is published by the Eastside Association of Fine Arts. Issue Date: December, 2007. Published monthly except June and July. Volume No. 32, Issue 10. EAFA News is free to members.

EAFA Board Members 2007-08

President	206-282-1813	Charlette Haugen chhaugen@aol.com
Vice President		Cherry Van Overstraeten
Secretary	206-364-9418	Kay Louise Cook Lizziekay41@hotmail.com
Treasurer		Volunteer Needed
Bookkeeper		Volunteer Needed
Acting Treasurer	206-930-4101	Joe MacKechnie
Art Education	425-451-8111	Cheryl Hoople cghoople@hotmail.com
Bulk Mailing	206-232-5226	Gerri Aslin geriaslin@comcast.net
Digital Committee	253-941-1488	Annette Burt megcapandrainey@seanet.com
Finance, Public Relations & Website		Joe MacKechnie joe@netos.com
Grants and Organization	425-486-5741	Ted Pankowski tedpankowski@msn.com
Liaisons	425-788-9172	Ellen Williams cameraready@msn.com
Greeter	360-766-4226	Marcia Huber artistryofdreams@earthlink.net
Historian	425-788-9172	Ellen Williams
Hospitality	425-788-1815	Georgianne Arnot georgianne46@hotmail.com
Meetings and Storage	425-747-6045	Roy Kaesemeyer kaese@comcast.net
Members' Show 2008	425-228-5223	Adrienne Anderson-Smith adriennemas@aol.com
Membership	253-887-7814	Georgianne Arnot Susan Storey storeylane@yahoo.com
Monthly Competition Newsletter	425-836-9482 206-941-2409	Shirley McGrew mertmcgrew@msn.com
Nominations	425-822-3943	Peter Schulte peteschulte@yahoo.com
Plein Air	425-486-5741 206-634-0570	Lyla Jacobsen glnjacobsen@msn.com Ted Pankowski Jim Adkins jeadkins1@comcast.net
Programs	425-453-1861	Lynn Coyle lynnuncatcher@aol.com
Public Art	425-562-6295	Camea Davidson camea@cameadavidson.com
Bellevue Lib. DF Smith/Bellevue Gardens		JoAnne Kilburg Lyla Jacobsen
Redmond ORSCC		Nicki Smith, McAlister Merchant, Marla French
Overlake Hosp South Tower		Shirley McGrew Kathy Berg/Carol Pierce
Issaquah Winters House		Ted Pankowski Jay Levey
Public Relations and Web Site	206-930-4101	Donna Jean Perry Joe MacKechnie joe@netos.com
Video Rental	425-827-7580	Petra Fursman pfursman@msn.com
Volunteer Show	425-836-9482	Shirley McGrew mertmcgrew@msn.com
32nd Annual Exhibition	425-776-8280 425-649-5525	Marla French marlafrench@hotmail.com McAlister Merchant windsir@mindspring.com

Monthly Competition

There will be no competition in December due to EAFA's full agenda. Enter in January! The following are the November winners. Congratulations to all!



2nd Place: Shirley McGrew



3rd Place: Dolores Billings



1st Place: Harold Johnson

EAFA Honors Volunteers

Many EAFA artists have been nominated and selected to be part of the **Volunteer Services Awards Exhibition**, *Service to Others—Art to Heart*. The exhibition's purpose is to recognize volunteer services performed by EAFA members for the visual arts. Dates of the exhibition are January 4, 2008 – February 29, 2008 at the Old Redmond Schoolhouse Community Center, 16600 NE 80th, Redmond, WA 98052.

The following artists will be recognized with this show: Jim Adkins, Georgianne Arnot, Geri Aslin, Kathy Berg, Dolores Billings, Kay Louise Cook, Lynn Coyle, Camea Davidson, Marla French, Petra Fursman, Jocelyn Garner, Charlette Haugen, Cheryl Hoople, Marcia Huber, Lyla Jacobsen, Roy Kaesemeyer, JoAnne Kilburg, Jay Levey, Sheila Mattick, McAlister Merchant, Shirley McGrew, Joe MacKechnie, Ted Pankowski, Debbie Parker, Donna Jean Perry, Carol Pierce, Dan Riley, Al Slatin, Nicki Smith, Don Stewart, Susan Storey. These artists will be officially recognized at the EAFA general meeting on January 17, 2008. Many thanks to these tireless volunteers for the countless hours they have donated to enhance the visual arts in our region.

Submit Your Work to EAFA Public Art

When you register for the Public Art Program, please include five *sample* photos of the work that you do now. Identify your medium and genre, such as oil portraits, watercolor landscapes. Perhaps you do both. Please let her Camea know. As always, send your samples in jpeg format along with a bio/artist statement in MS Word to camea@cameadavidson.com.

EAFA's Monthly Competition is made possible through the generosity of

Bellevue Art and Frame

1024 116th Avenue NE Bellevue, WA. 98004 (425) 453-8959

EAFAs 32nd Annual



1st Place *Authenticity* by Donna Watson



2nd Place *Leda and the Swan* by Claudia Pettis



Photography Merit Award *Douglas Church* by Michael Frye



EAFAs Gratefully
Acknowledges
Our Sponsors

And the Winners Are!

<i>First Place</i>	Donna Watson	<i>Bellevue Art & Frame</i>	Barbara Newton
<i>Second Place</i>	Claudia Pettis	<i>MIVAL</i>	Linda Bean
<i>Third Place</i>	Kathie Bliss	<i>NWWS</i>	Pia Messina
<i>Merit Award, Photo</i>	Michael Frye	<i>Women Painters of Washington</i>	Nancy Bogni
<i>Merit Award, 3D</i>	Joan Watkins	<i>Parklane Gallery</i>	Yan Tian
<i>Merit Award, 2D</i>	Seiko Konja	<i>Northwest Collage Society</i>	John Vandebrooke
<i>Winsor & Newton</i>	Jeanine Smith	<i>Seattle Co-Arts</i>	Mary Anderson
<i>HK Holbein, Inc.</i>	Genny Rees	<i>Dakota Art</i>	Barbara Seese
<i>ADG Printing</i>	Kay Dewar	<i>Daniel Smith</i>	Kate Barber
<i>ADG Printing</i>	Dan Riley	<i>Cheap Joe's Art Stuff</i>	Brenda Zager

Open Exhibition



3D Award, Joan Watkins



3rd Place *Cool Operator* by Kathie Bliss



2D Award *Kaz* by Seiko Konja

Hundreds of artists and well-wishers braved inclement weather to say a fond farewell to outgoing **Mayor Rosemarie Ives** and to open the *RedmondLights Celebration* at Redmond City Hall, Sunday, December 2. The occasion was the awards ceremony for EAFA's 32nd Annual Exhibition, one of the City's featured events to kick off the Holiday season. In presenting the awards to those singled out among the 100 artists whose works are on display, Mayor Ives said that the City was very pleased with the exhibition and that visitors have responded to the exhibition with a "sense of joy."

Responding in kind, EAFA president Charlette Haugen thanked the mayor and all those who worked on the show, particularly member **Roy LeBan**, the former chair of the Redmond Arts Commission, whose vision more than a year ago opened up the possibility of "this wonderful collaboration between the City and EAFA. We hope the new Arts Commission will consider the possibility of a repeat performance next year." The 32nd Exhibition is open to the public from 10:00-5:00 pm weekdays until January 4, 2008.



Winners Kathie Bliss, Donna Watson, Claudia Pettis



Mayor Ives Awards 1st Place to Donna Watson

We Gratefully
Acknowledge
Our Sponsors

STANDING OYATION
The Eastside's Premier Fundraiser For the Arts



Member News and Opportunities



EAFAs member **Thomas Traeger** is showing at Parklane Gallery and will be the featured artist in April. For details, visit www.parklanegallery.com. Also, Tom is finishing two months as "Featured Artist for 2007" at Alexa's Cafe where he shows fifteen watercolors. Alexa's is a few doors down from Kaewyn Gallery on Main Street in Bothell.

EAFAs's **Margaret Stermer-Cox** tells us that artist **Ann Kullberg** is teaching her Portraits I/Colored Pencil Workshop, February 22-24 in Ocean Shores. Learn from one of the best while enjoying the beautiful Washington coast in winter. For information and registration visit www.annkullberg.com/or contact Patti at sells2@oceanshoreswa.com, 360-289-4411.

EAFAs's **Harold Johnson** is showing in the first annual SmallWorks North America Exhibition, one of the largest exhibitions of original miniature art on the East Coast. Visit www.smallworksna.com for more details.

Parkplace Books in Kirkland will show **Gudrun Bayerlein's** Black and White and Lith Prints until Dec. 30th. Gudrun Bayerlein is also the artist selected to show her work at the Bellevue Public Library through January.

Artist Trust is proud to accept nominations for the 2008 Twining Humber Award for Lifetime Artistic Achievement, postmark deadline: January 25, 2008. The annual award of \$10,000 is given to a Washington State female visual artist, age 60 or over, who has dedicated 25 years of her life to creating art. Nomination forms can be downloaded from the Artist Trust website at www.artisttrust.org or contact: Heather Joy Helbach-Olds, Director of Programs, heatherjoy@artisttrust.org, 206/467-8734 x10; toll-free 1/866/218-7878.

4th Annual *FiSHing for a Cure* Auction

It's not too late to provide a piece of your artwork, matted, framed, or miniature, for the FSH (upper body muscular dystrophy) Gala Auction, 26th January at Bellevue Hyatt. The sooner you download the procurement form the better chance you have of being listed in the catalogue & advertising your artwork. If you didn't pick one up at the EAFAs General Meeting, they may be downloaded at www.fshfriends.org. Mail it to Friends of FSH Research, 217 19th Pl, Kirkland, WA 98033. If you have questions, contact EAFAs Secretary **K Louise Cook**, 206-364-9418 or lizziekay41@hotmail.com.

After 11th Dec, contact **Terry Colella** to arrange pick-up and delivery of your donation to her Kirkland address, or to request a formal invitation to the party! 425-576-8954 or fishauction@fshfriends.org.

Joe MacKechnie and **Dan Riley** will be hosting their Creative Portrait Drawing and Painting Workshop on the weekend of February 8, 9 and 10 (Fri, Sat and Sun) from 9 am to 4 pm at the Arts Umbrella Studio in Bothell. This workshop is highly acclaimed and is filling up fast. If it fills up then a "rain-check" workshop will be held on March 7, 8 and 9. The cost of 3 day workshop is \$240. For information or registration contact Dan Riley at rileydk@comcast.net or (425) 746-2555.



Covarrubias Charcoal
by Joe MacKechnie

Paint Tuscany, Italy with **Jim Lamb**, September 13-27 at Le Casacce, an estate near Seggiano. Reservations required by January 30. 206.431.8227, <http://magicpalette-skilletworkshops.com>



Member News and Opportunities



Call for Artists as Volunteer Panelists — A roundtable of panelists speaking on various topics pertinent to well-informed artists is in the planning stages for the EAFA February 2008 Members meeting. Topics to be discussed are: 1) Importance of Good Photography of Artwork and “how-to” tips and guidelines for accomplishing it; 2) Self-Promotion Tools and Portfolio Basics; 3) Getting into Juried Shows, Fairs, Festivals, and Exhibitions (timeline set-up; pricing of artwork; framing guidelines, shipping tips, etc.) and 4) Inventory Tracking. Each panelist will speak approximately ten to fifteen minutes after which a question and answer period will be held. Panelists will need to have hand-outs of tips and guidelines on their topics. These will be loaded on EAFA’s website for easy access. The program can only go forward with the help of those who are able to volunteer and are interested in sharing their knowledge and expertise. If you would like to participate, please call Program Chairperson **Lynn Coyle** at (425) 453-1861 who is coordinating the program set-up.



By Pat Hitchens

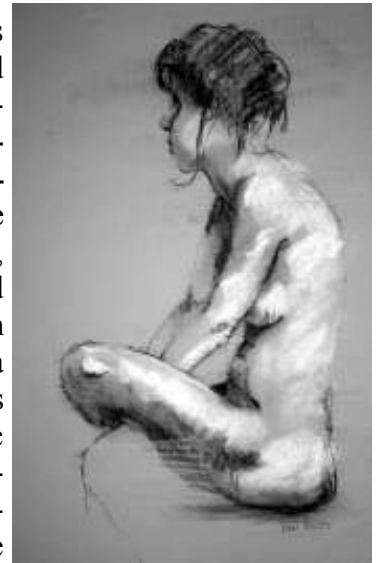
Featured artists for December are **Kate Jones** and **Pat Hitchens** at Parklane Gallery, 130 Parklane in Kirkland. Gallery hours are 11am to 6 pm seven days a week. Kate's sumi work offers comfort, recollection and enlightenment through nature and Pat's years of birding have provided the subject of this show. An artist reception will be held Dec 13, 6:00-9:00. See <http://www.parklanegallery.com>.

EAFA's **Joanne Shellan** urges you to apply now at www.KirklandStudioTour.com to be a part of the Kirkland Artist Studio Tour 2008! The website has everything you want to know about the tour. You can now sign up on-line too! Deadline to be a part of this forty artists strong tour is Jan. 31, 2008. If you like to show and sell your work, this successful Mother’s Day weekend tour is fun and profitable.

Jo Anne Kilburg received a Signature Membership in the prestigious Northwest Watercolor Society as of October 30th.

Sylvia Carlton showed Moments in Time, A Plein Air View November 1st to 30th at Gallery North in Edmonds.

In the last 5 years drawing has re-emerged as a major fine arts medium. **Dan Riley’s Figure Drawing Workshop** will be held on the weekend of January 25, 26 and 27 (Fri, Sat and Sun) from 9 am to 4 pm at the Arts Umbrella Studio in Bothell. This workshop teaches basic drawing using both traditional and modern approaches. If you are new to drawing, or *Deidra* Charcoal by Dan Riley haven’t done figure drawing in a while, this is a great workshop to get you up to speed. Suitable for beginners though advanced artists. The cost of \$180 includes model fees. For information or registration contact Dan Riley at rileydk@comcast.net or (425) 746-2555.



Susanne Werner is participating in the following group shows: Women Painters of Washington Gallery at the Columbia Center, 701 5th Ave Seattle, and the Women Painters of Washington member show at the Monte Christo Hotel/Gallery in Everett. Susanne also has a solo show at the Naficy Plastic Surgery and Rejuvenation Center at 1110 112th Ave NE Bellevue. Three sites host her work and artist's biography: <http://www.womenpainters.com>, <http://www.parklanegallery.com>, and <http://www.thelivinggallery.com/sw01.html>.

See more EAFA fine art online at www.eafa.org



Eastside Association of Fine Arts
 P O Box 50446
 Bellevue WA 98015-0446

NON-PROFIT ORG
 U S POSTAGE
 PAID
 BELLEVUE WA
 PERMIT NO 00329

ADDRESS SERVICE REQUESTED

Calendar and Directions

SEASON'S GREETINGS

FROM YOUR EAFA BOARD MEMBERS

Thursday, December 20: EAFA General Membership Meeting 10am Highland Community Center. If your name starts with G or H, please arrive 45 minutes early to help with setup.

Thursday, December 20: EAFA Newsletter deadline, copy to Peter Schulte, peteschulte@yahoo.com

Thursday, January 3, '08: EAFA Board Meeting, 10am-noon, home of Sheila Mattick

Friday, January 4: Volunteer Show artwork delivery, ORSCC, 10 - noon

Monday, January 7: 32nd Exhibition artwork pickup, 10-2, Redmond City Hall

Thursday, January 17: EAFA General Membership Meeting

Directions from I-405, take NE 8th Street exit east. Turn left at 140th Avenue NE. Turn right on NE Bel-Red Road. Turn left two blocks up the hill onto NE 20th Street, between the YMCA and Highland Center. **From SR-520,** take 148th Avenue NE exit south. Turn right on NE Bel-Red Road. Turn right four blocks down onto NE 20th Street, between the YMCA and a Highland Center.

